

DIGIMIC CMic

Delegates' Conference Unit with channel selector and voting functionality

Article no.: 05.0167



Introduction and connectors

The CMic from the DIGIMIC family is a multifunctional unit for your conference delegates. It has a microphone, headphone jack, loudspeaker, channel selector and voting function. These functions are controlled by five keys.

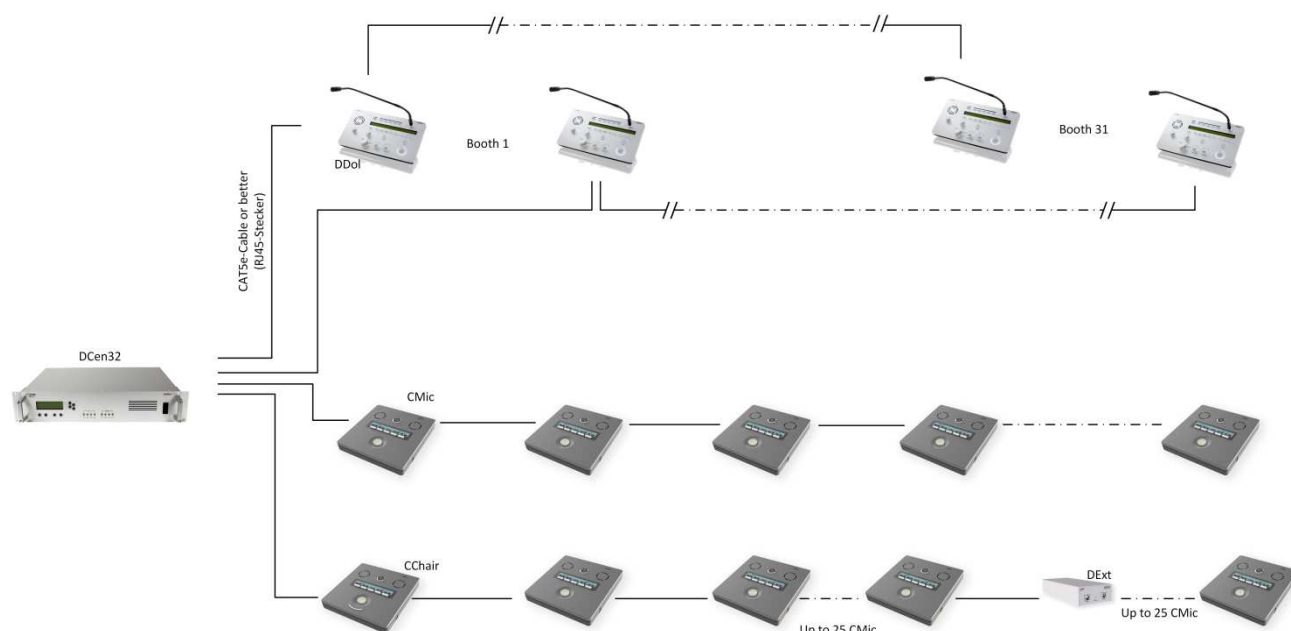
The actions are shown on an OLED display. The display automatically adapts to its environment. The language channels are fed into the DCen32 central system internally via the DDol32 interpreter console or externally via DANTE®.



Connection from the previous CMic or the central unit (RJ45 plug)

Connection to the next CMic (RJ45 plug)

System diagram (example)



The CMic units are connected to each other by CAT5e cable or better. CMic chains can be extended using the DExt additional power supply unit.



CMic units are not allowed to be mixed with other devices of the DIGIMIC family in one chain. (Except additional power supply DExt for extension of CMic chains.)

Headphone

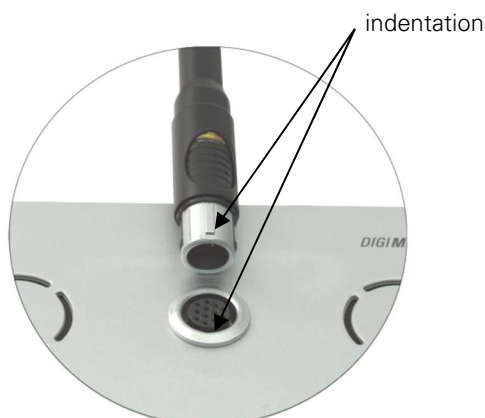
There are two ways to listen what's being said - through the built-in speakers or through headphones. Connect the headphones to do this. The CMic starts at a standard volume. Press the function keys VOL +/- to adjust the volume. The current volume is shown on the display.



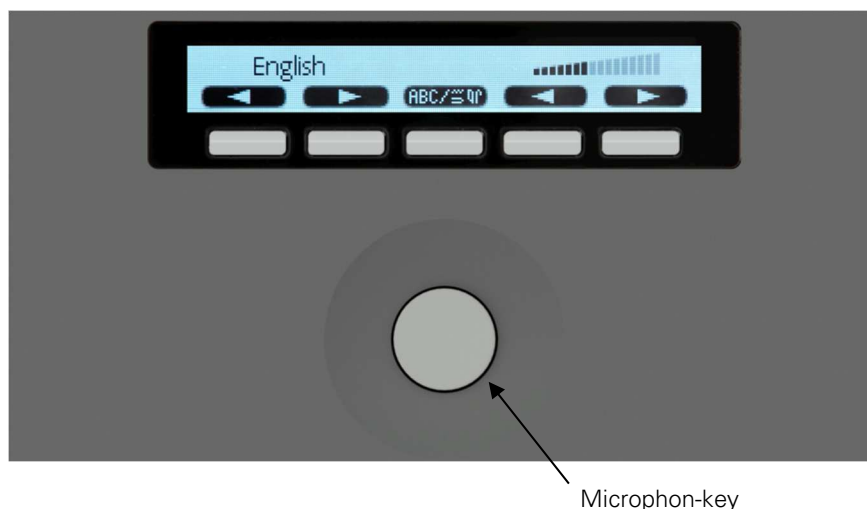
Language channels can only be received via headphones. If no headphones are connected, you can only listen to the original channel (floor) via loudspeakers.

Microphone

Insert the microphone as shown in the sketch. Pay attention to the notch on the microphone plug and the Minicon jack. Screw the microphone on tightly to lock it in place.



Press the microphone button to turn on the microphone. Press the Microphone button again to turn the microphone off. When the microphone is switched on, the speaker of the CMic switches itself off to avoid feedback.



The CMic units operate in different mode settings. These are determined by the operator of the conference. After pressing the microphone key, there are the following options:

Button and ring light up: The microphone is activated. You can speak.

Button and ring are off: The maximum number of speakers has been reached - you must try to switch on your microphone again at a later time.

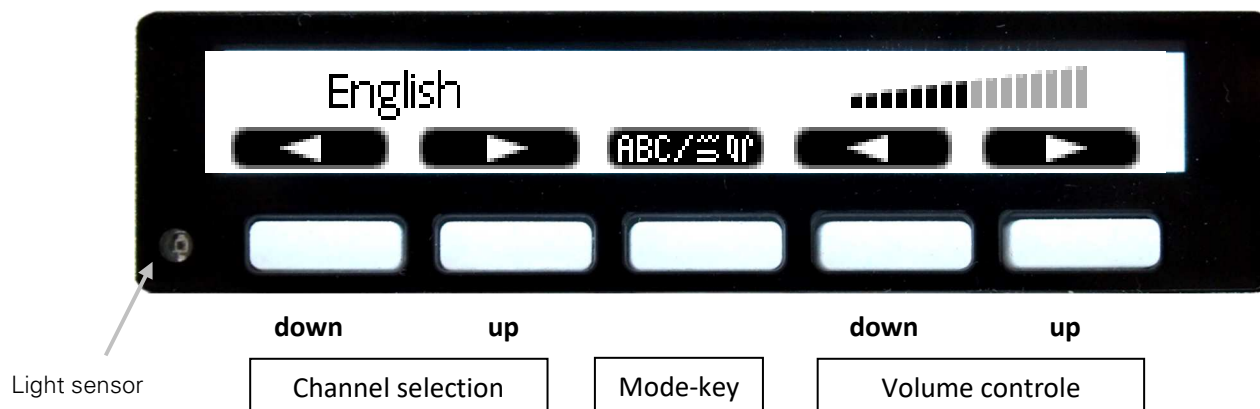
Button flashes red: The maximum number of speakers has been reached. You have to wait (request to speak). Your microphone is automatically activated as soon as another speaker switches off his microphone or you are given the floor.

Channel selector

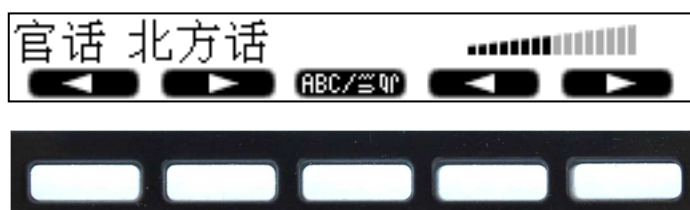
The DIGIMIC CMic receives up to 32 channels - floor channel and 31 language channels. Channel and language assignments are made at the central DCen32 in real time. Press the function key CH +/- to set the desired language. The CMic automatically detects which channels are in use. Unused channels are skipped during dialing.

Example: In addition to the floor channel, channels 5 and 10 are occupied. When you select the language using the function key (+), the DIGIMIC CMic automatically jumps from channel FL (Floor) to 5 and on to channel 10. Next, you return to channel FL.

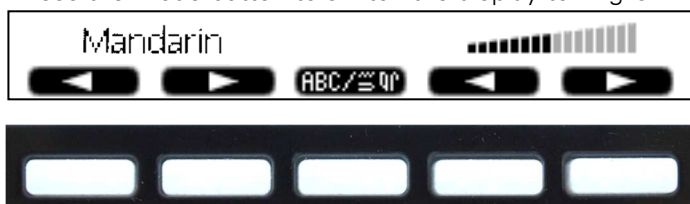
The display shows the selected channel either in native language or in English. Press the Mode button to switch between the two variants.



Example: A channel that displays the chinese language in the country-specific mode:



Press the Mode button to switch the display to English:



The channel selector display is only shown if the desired channels are defined in the DCen32 central unit. Otherwise the boot-up logo remains on the display.

Voting

Voting procedures are possible with the DIGIMIC CMic. A DIGIVOTE voting software must be used for this purpose. As soon as a tuning is started, the tuning options are shown on the display.

Press the function keys to vote. Depending on the settings the display will change. Below are a few examples:

Display of all 5 keys and vote on five options:



Display with digits:



The delegate has selected key A:

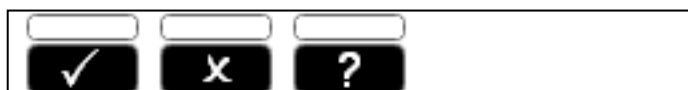


Depending on the setting, the answers can be corrected several times,

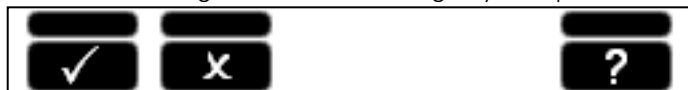
or multiple answers may be allowed:



The following example provides for a parliamentary vote. There are only three possibilities:
YES, NO, ABSTENTION:



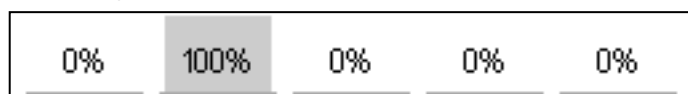
A different arrangement of the voting keys is specified here:



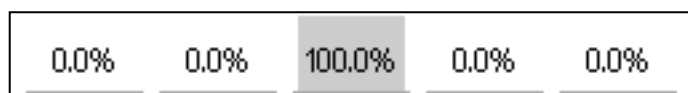
The special feature of this voting is the so-called Secret Mode: Here it is not shown which key was pressed. All keys are marked to indicate that you have voted.

Depending on the setting, the result of the voting is shown on the display - even during operation. Several display modes are possible:

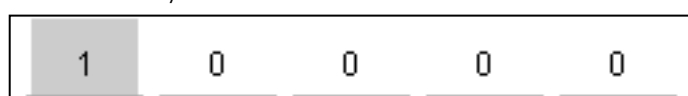
Percentage ...



... with one decimal place



...or absolutely:



Screen saver

After a few seconds, the display automatically switches to a screen saver mode and darkens. By pressing a key or starting a vote, the display returns to normal operation.

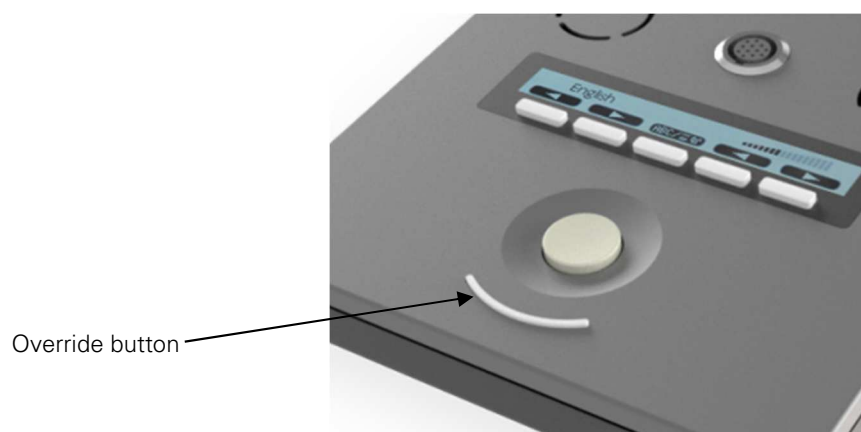
The duration can be set in the DCen settings.

Chairman-Version (CChair)

The DIGIMIC CMic is also available in a chairman version. It gives special priority to the chairman of a conference. Press the override button to mute all delegate units. There are two override variants:

Permanent: Press the override button to mute all delegate units. The delegates have to switch on their microphones again to speak.

Temporary: Pressing and holding the override button mutes the delegate units. When you release the Override button, the previously muted delegate units are turned on again.



Warnhinweise



Set the CMic to an appropriate volume. Do not listen too loudly through the headphones.



The connectors of the CMic are only suitable for additional CMic, CChair or DExt. Do not connect any other devices!



In case of malfunctions contact a technician, do not try to repair, unscrew or similar the CMic by yourself.

Further information about our products can be found on the Internet under:

www.braehler-systems.com

© 2019

Copyright by BRÄHLER Systems GmbH, Königswinter

All rights reserved, in particular (also in extracts) those of translation, reprinting, reproduction by copying or similar procedures.

BRÄHLER Systems reserves the right to make technical changes without prior notice.

Brähler Systems GmbH

Auf der Alten Burg 6

53639 Königswinter, Germany



+49 2244 8414-4

sales@braehler-systems.com